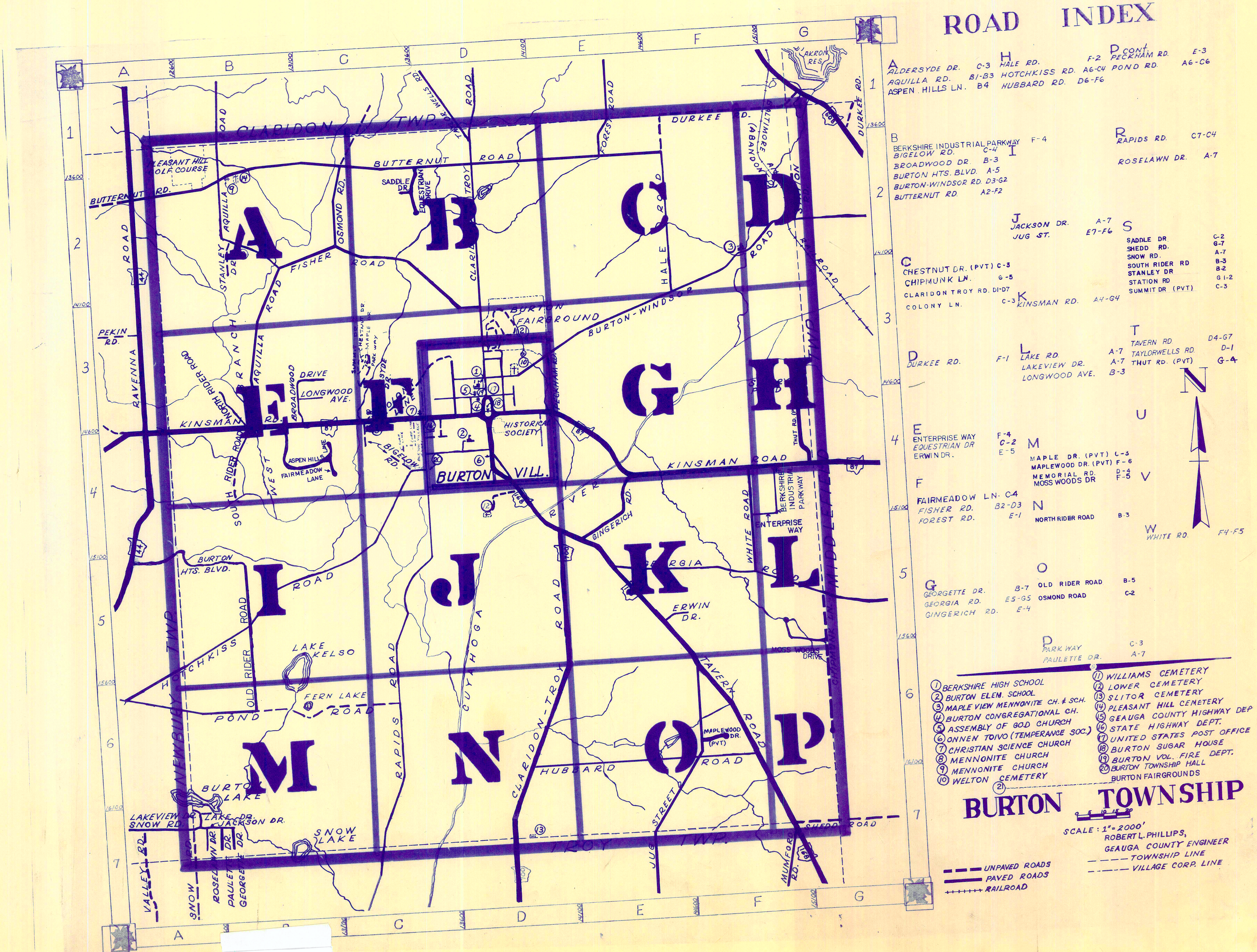
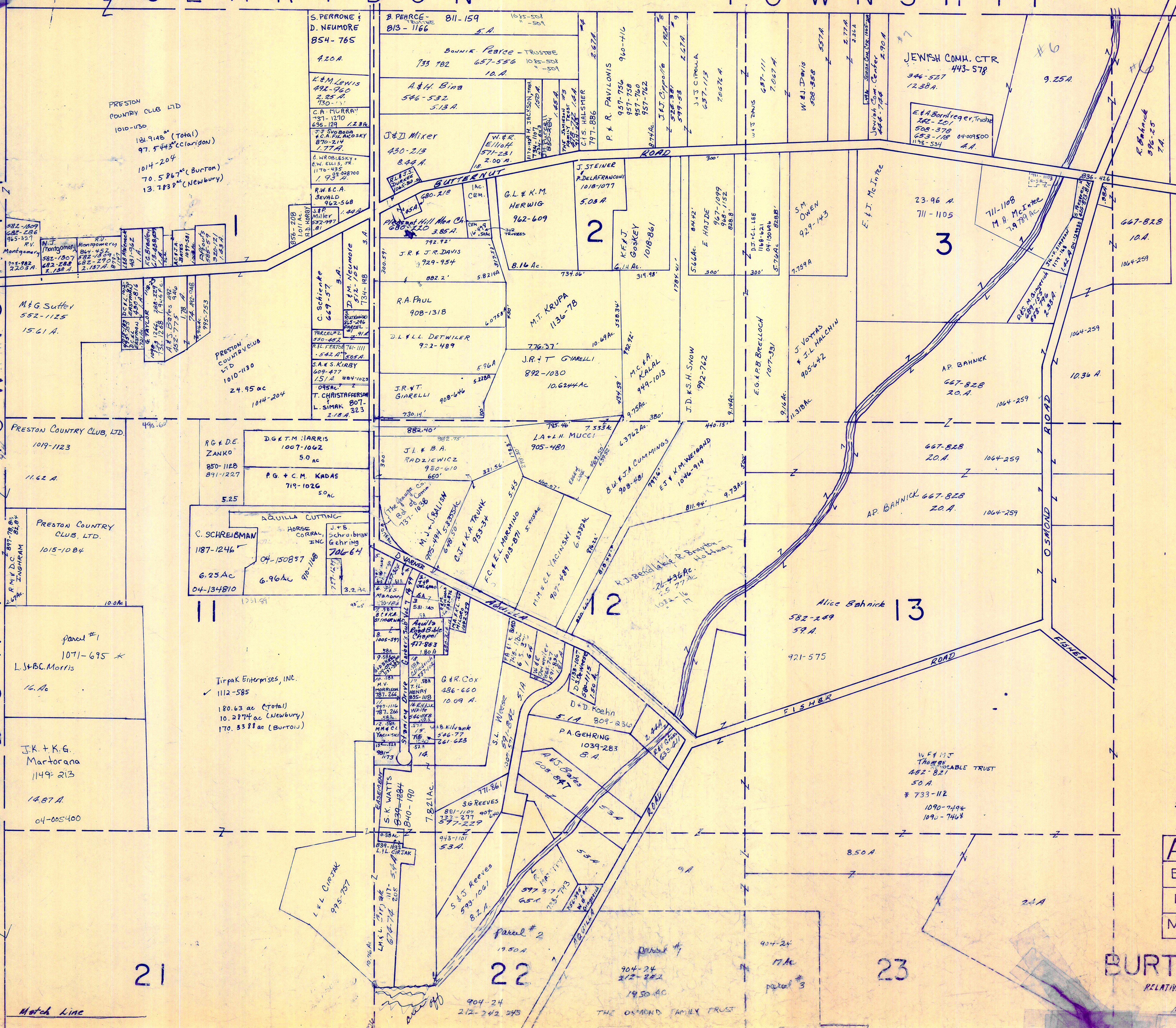


Last Updated 4/9/99.
Please see GIS.



CLARIDON TOWNSHIP

NEWBURY TOWNSHIP



* Inadequate Description

SCALE 1" = 300
JAN 1, 1999

A	B	C	D
E	F	G	H
I	J	K	L
M	N	O	P

BURTON TWP
RELATIVE REPRESENTATION
Match Line

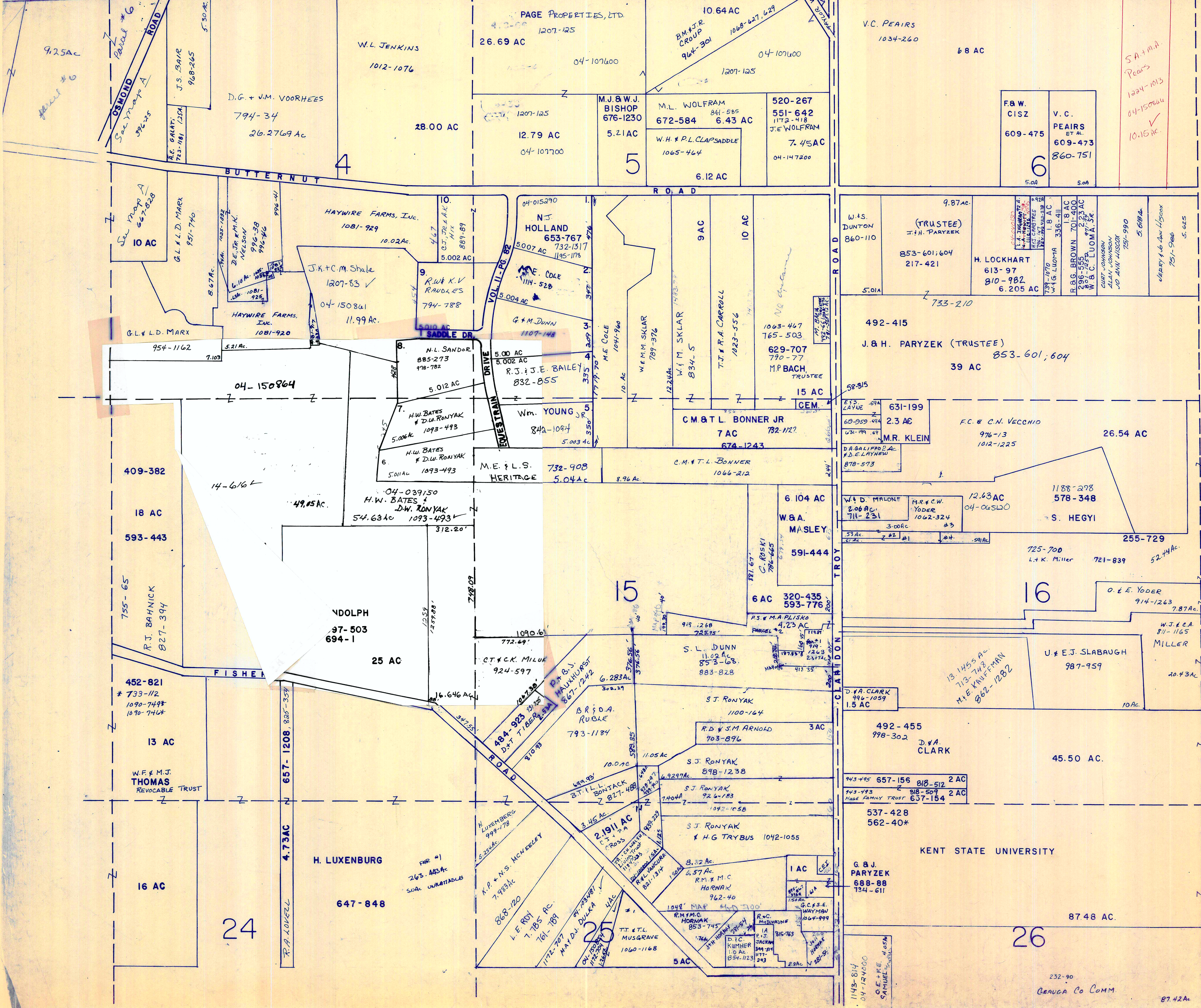
Match Line

21

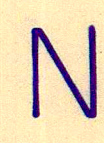
22

23

CLARIDON TOWNSHIP



5A + 11A Peairs 1224-1013 04-150000 10.16 AC



SCALE 1" = 300'

A	B	C	D
E	F	G	H
I	J	K	L
M	N	O	P

BURTON TOWNSHIP

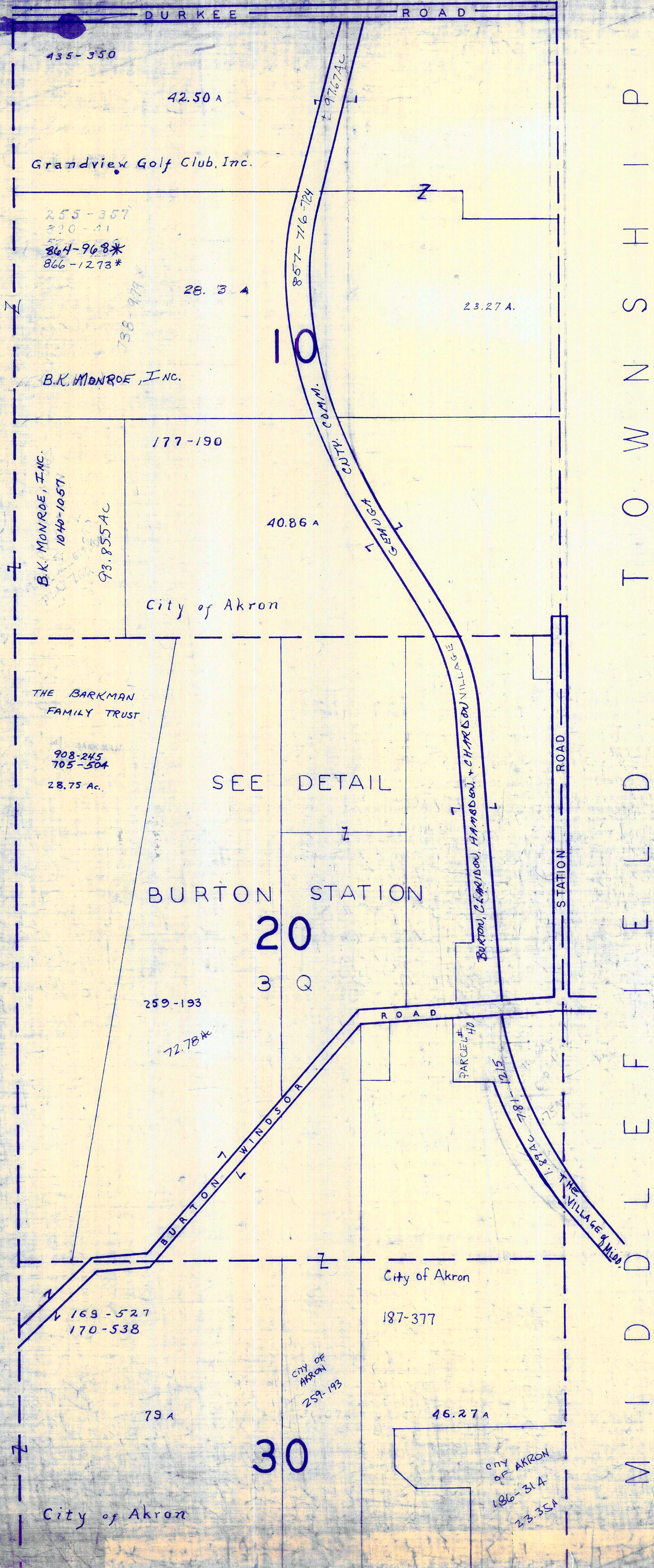
RELATIVE REPRESENTATION

232-90
CRAUCA Co Comm.

87.42A

JANUARY 1, 1999

CLARIDON TOWNSHIP



M I D D L E F I E L D T O W N S H I P



SCALE 1"=300'

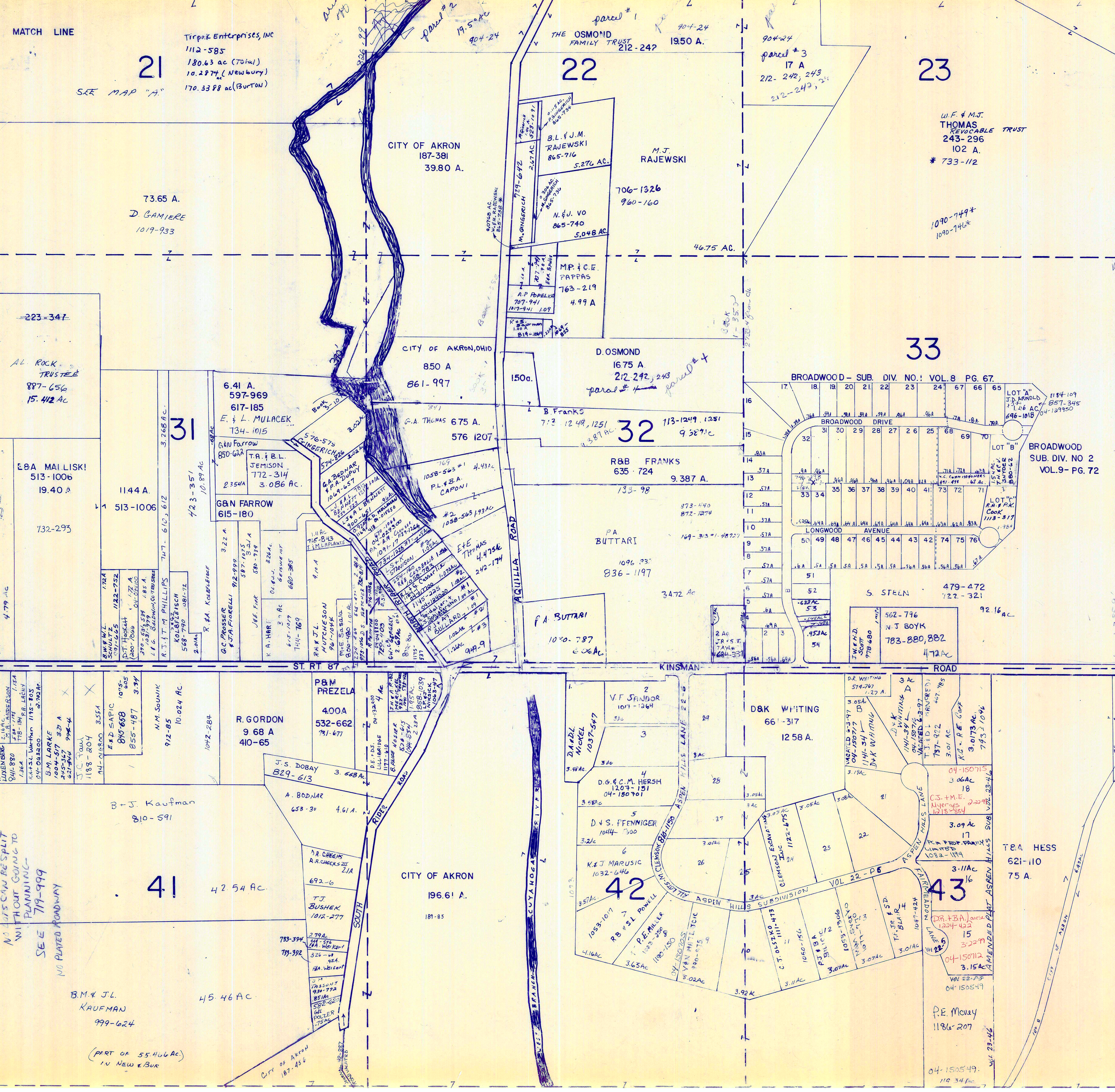
January 1, 1998

* Inadequate Description

A	B	C	D
E	F	G	H
I	J	K	L
M	N	O	P

BURTON TWP

RELATIVE REPRESENTATION



BROADWOOD SUBDIVISION NUMBERS ONE & TWO

1	G. M. R. CIGANY	117A 565-405	740-753	04-09100
2	M. W. Dailey		874-872	
3	N.M. PAGE	910-714	865-131	
4	PT. SODEE		531-193	
5	D.B. MARJOLA		884-150	
6	R.C.B.M. MCKENZIE		1111-635	
7	W.M. SIMON & S.C. DELMORE		859-776	
8	C.A.J.M. LEE, et al		1118-56	
9	L.B.A. BEEDLOW		558-1303	
10	W.B.F. MINICK		470-78	
11	F.B.J. McBEIDE	732-598	469-780	
12	J.B.L. MYERS		667-511	
13	J.F.L. Frajter		815-119	
14	G.B. FISH		678-190	
15	R.B.K. HURD		665-1236	
16	D.A. KLEVE	1099-173 1096-405	684-1255	
17	G.M. STETTINO		665-570	
18	D&P BRAUNLICH			
19	D&M. CHARVAT TRUSTEE	927-832	520-681	
20	R. HOLLAND		926-1736	
21	C.B.I. LILLY		550-1329	
22	M.B.M. LOVAS	732-1180	674-265	
23	R.A. + C.L. FOLMSON		791-720	
24	G.G. + D.M. PODBOY		761-1281	
25	R.E. + R.L. GRUBER		781-1128	
26	M.J. + K.M. ALLISON		831-733	
27	R.G. + K.K. TIMMONS		1052-646	
28	L.A. SWANEY		714-1283	
29	T.E. DAVIS & B.L. DAVIS	04-032300	410-348	04-1007100
30	A.L. + D. COSTA		986-137	
31	J.B.J. GONCZY		621-1258	
32	M.E. NYITRAY		1052-296	
33	L.A. + S.B. SLATER, JR. (40')		772-766	
34	K.B.E. LOUMA	733-520	478-392	
35	H.J. III + D.M. MURPHY		1026-961	
36	A. + B. KISSINGER + O. BOSSO	1179-894	611-191	
37	JIM PAUL		521-4	
38	WILLIAM + PATRICIA DUTCHMAN		781-511	
39	R. EPPRECHT		538-263	
40	A.B.L. GORRIS		528-818	
41	C.P. + L.T. CHEUNG	1043-439	916-666	1047-211
42	L.J. PFLAR		1092-3	
43	M. + B. PLESTER		804-374	
44	R.B.D. BUSBY		609-34	
45	B.J. O'Brien	1062-139	849-977	
46	P.H. BUSBY		1097-734	
47	M.E. HURLEY		555-660	
48	S. STEEN		670-1331	
49	M.S. + M.O. CONNER	04-007900	116-1185	
50	D.R. + L.L. MURPHY		116-1163	
51	P.E. + S.L. CARROLL		954-326	
52	T.B.S. RING	633-142	621-573	
53	R.J. SCHWENDEMAN	753A + 142A	576-34	
54	ELEANOR FINKE		746-998	
55	J.B.G. SUNDBERG		574-996	
56	R.W. + L.M. SKOLARIS		1047-282	
57	T.C. + J.L. WIGGINS	04-100550	1155-1005	
58	J. + D. RILEY		807-412	
59	D.E. + K.A. HOLUB		995-975	
60	M. + S. CHAPMAN		683-63	
61	D.A. + M.G. ZEIGLER		897-371	
62	T.A. WRIGHT	921-144	740-285	
63	D.B.J. HIRSCH		706-675	
64	R.B.S. SICRIANO TRUST		592-879	925-386
65	C.F. + D.L. BAXLER		691-1056	
66	R.B.B. FONTANELLE		721-1378	
67	A. C. SMITH		631-631	
68	T.H.E. C.V. SNYDER		890-62	
69	C.D.E. THAYER		875-1221	
70				
71				
72				
73				
74				
75				
76				
77				
78				
79				
80				
81				
82				
83				
84				

* BEING PART OF S/Ls - 31, 32, 33, 834.

* Inadequate Description

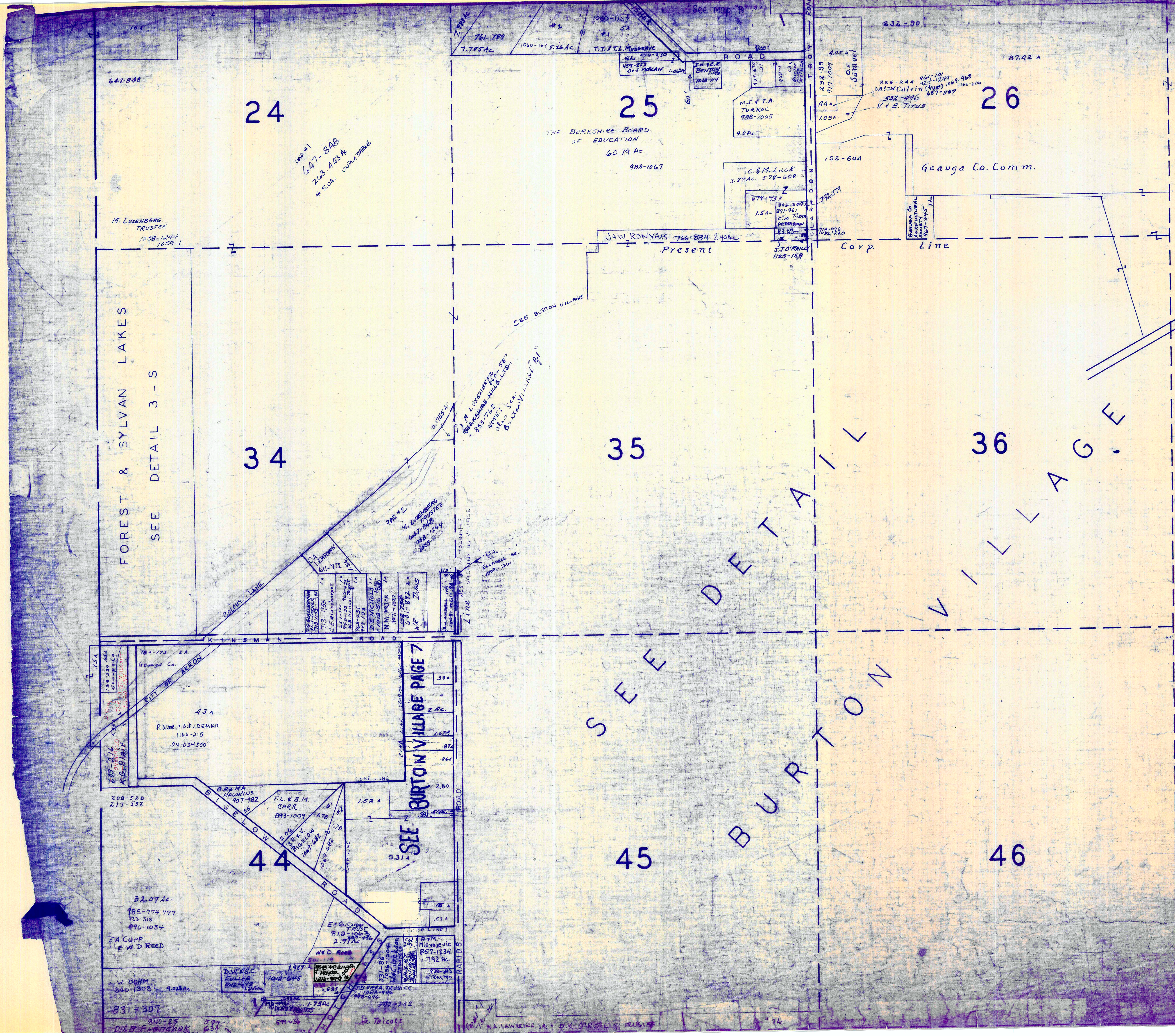
JANUARY, 1999

SCALE, 1" = 300'

A	B	C	D
E	F	G	H
I	J	K	L
M	N	O	P

RELATIVE REPRESENTATION

BURTON TWP.



647-848

24

799-1
647-848
263-403A
* Sch. 100-17886

M. LUMBERG TRUSTEE
1058-1244
1059-1

FOREST & SYLVAN LAKES

SEE DETAIL 3 - S

34

25

THE BERKSHIRE BOARD OF EDUCATION
60.19 AC.
988-1067

J.W. RONYAK 766-884 2.40 AC.
Present

SEE BURTON VILLAGE

35

26

Geauga Co. Comm.

Corp. Line

36

SEE BURTON VILLAGE PAGE 7

44

208-528
217-532

32.09 AC.
185-774, 777
723-318
896-1034
EA CUPP
& W.D. REED

L.W. BOHM
840-1308 9.028 AC.

831-307

840-25
D. & B. FRENCH

45

SEE BURTON VILLAGE

46

* Inadequate Description

SCALE 1" = 300'

JANUARY 1, 1984

A	B	C	D
E	F	G	H
I	J	K	L
M	N	O	P

BURTON TWP

RELATIVE REPRESENTATION



Match Line

Match Line



SCALE 1"=300'

JANUARY, 1999

A	B	C	D
E	F	G	H
I	J	K	L
M	N	O	P

BURTON TWP
RELATIVE REPRESENTATION

* Inadequate Description

Match Line

169-527
170-538

79A

30

177-10
259-93

City of Akron

187-377

CITY OF AKRON

23.35Ac

46.27Ac

186-314

City of Akron

City of Akron

City of Akron

509-1025
Part II

40

157.50 A

City of Akron

509-1025
80.15A
Part II

City of Akron

185A 184-480 513-98

City of Akron

509-1025
19.63A
Part II

232-101

14.80 A

R. Fritinger

3.355 Ac.

3.345 Ac.

E. THUT
940-43

3.025 Ac.

3.010 Ac. 8

3.021 Ac.

3.010 Ac. 9

3.010 Ac.

3.010 Ac. 10

M.K. GROFF
944-1012

3.010

3.010

M.K. GROFF
944-1012

4.083 Ac.

M.K. GROFF
944-1012
3.87Ac.

531-950

W.E.M.
LIVINGSTON

BERNARD
INC.
2Ac

D.C. & BARCLAY
187-357

631-457

M I D D L E F I E L D T O W N S H I P



SCALE 1" = 200'

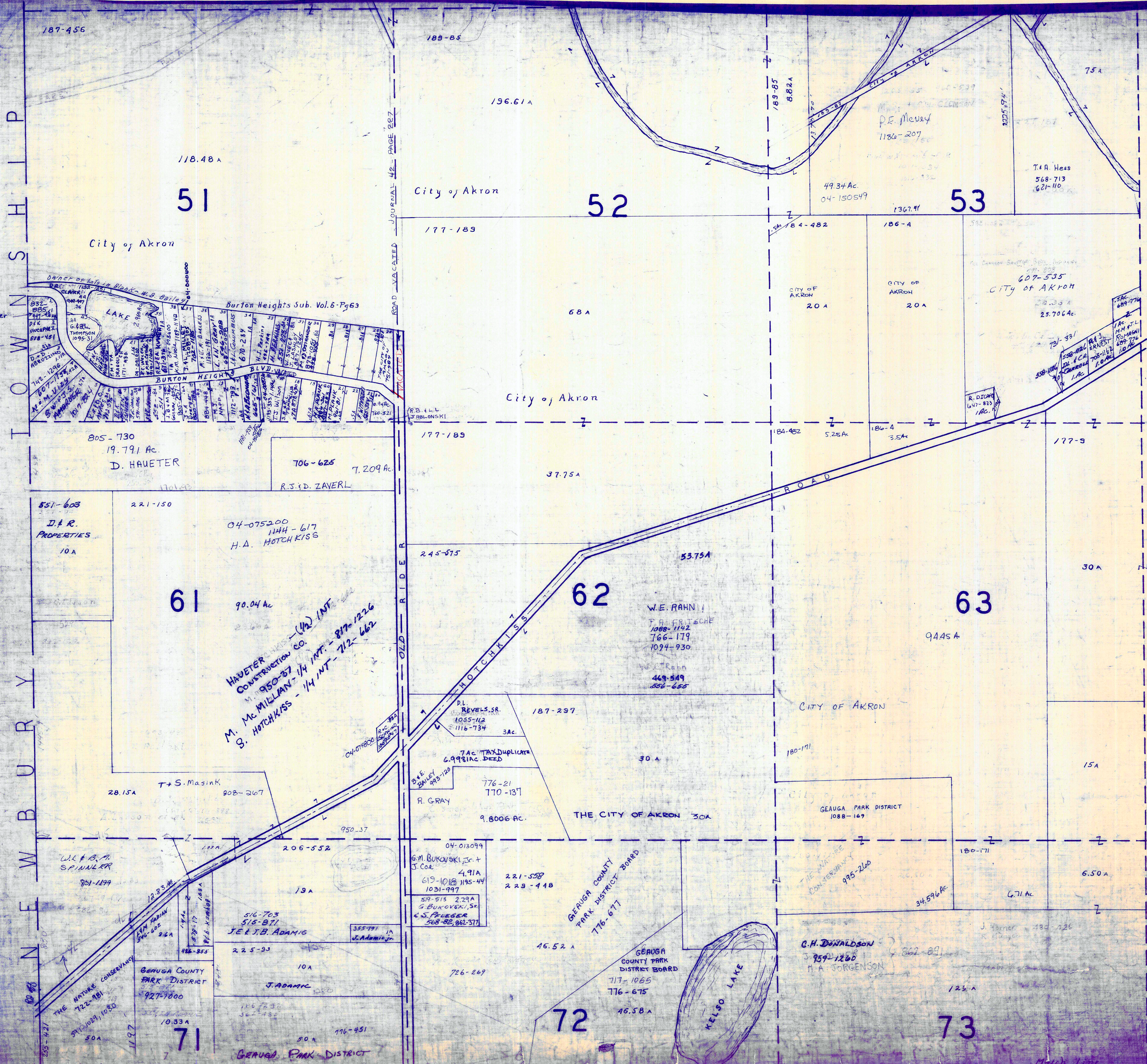
JANUARY 1, 1990

* Inadequate Description

A	B	C	D
E	F	G	H
I	J	K	L
M	N	O	P

BURTON TWP

RELATIVE REPRESENTATION



N



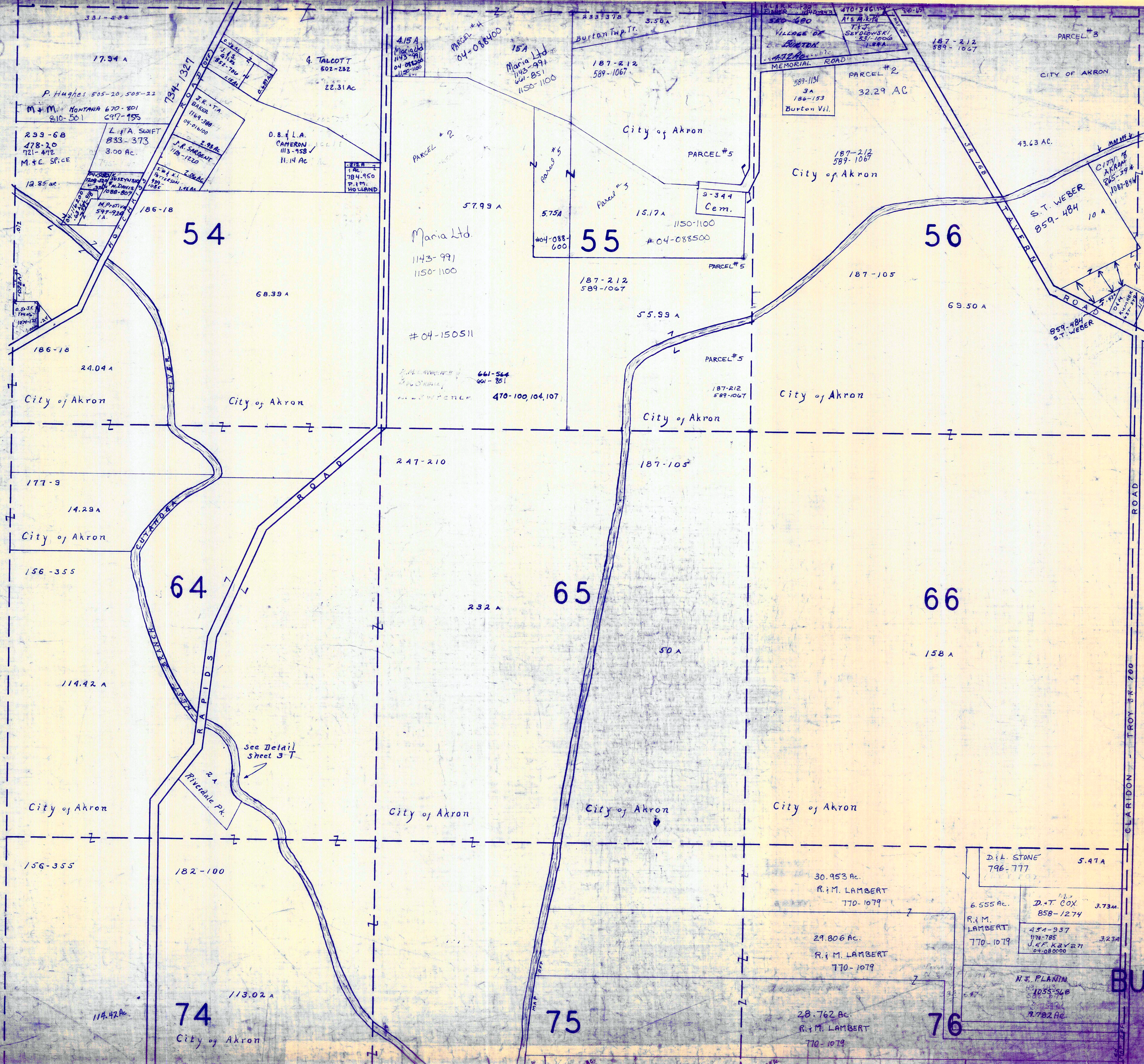
* Inadequate description

SCALE 1" = 300'

JAN. 1, 1998
RELATIVE REPRESENTATION

A	B	C	D
E	F	G	H
I	J	K	L
M	N	O	P

BURTON TOWNSHIP



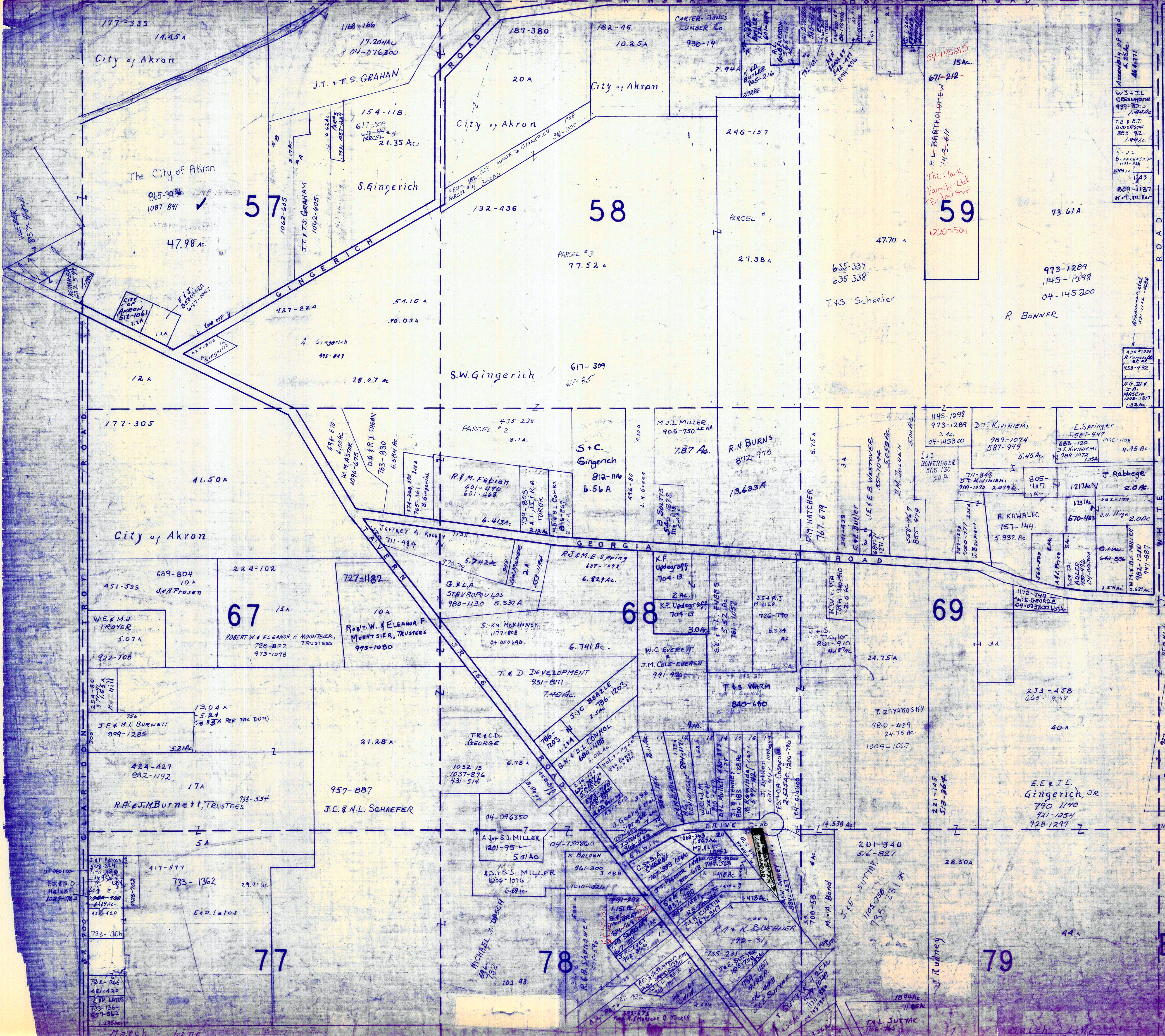
SCALE 1" = 300'

Jan. 1, 1989

A	B	C	D
E	F	G	H
I	J	K	L
M	N	O	P

BURTON TWP

* Inadequate Description



SCALE 1" = 200'

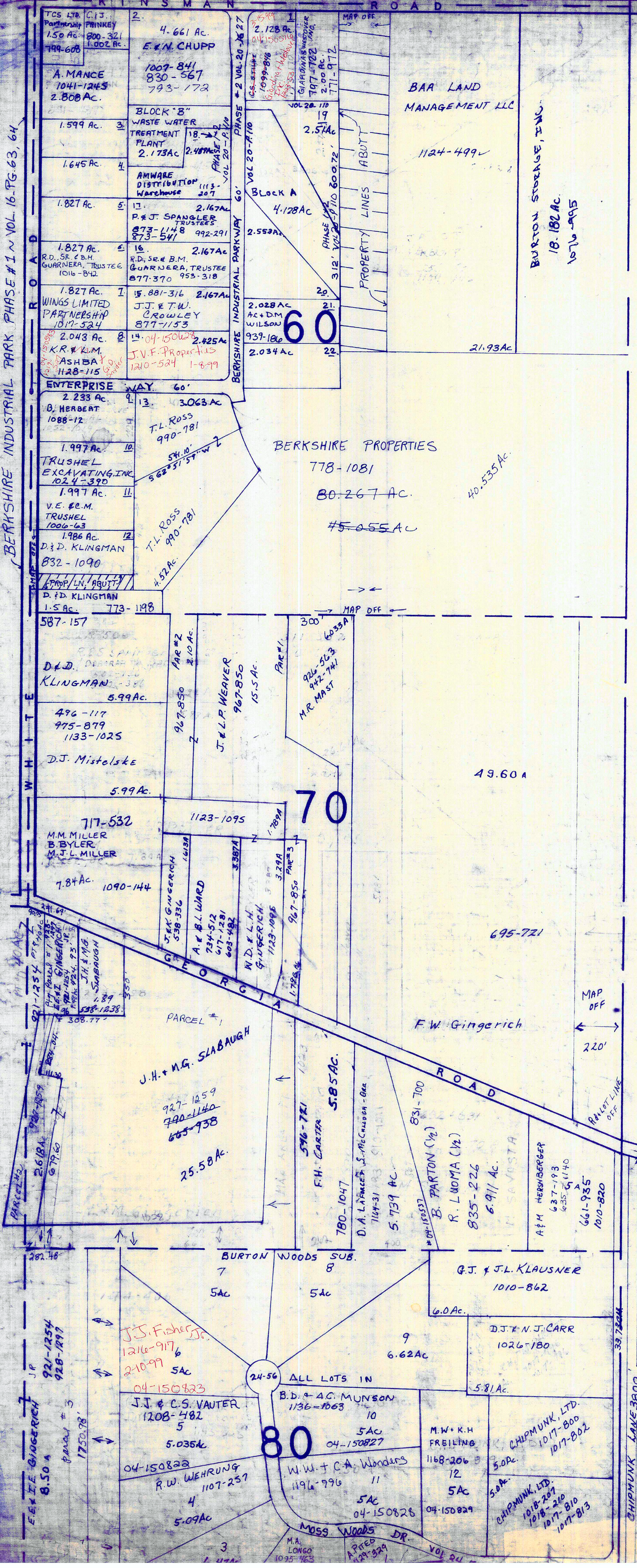
JANUARY 1, 1998
RELATIVE REPRESENTATION

A	B	C	D
E	F	G	H
I	J	K	L
M	N	O	P

BURTON TWP

* Inadequate Description

UNLESS NEWLY SURVEYED IN THE NAME OF BERKSHIRE PROPERTIES - 778-1081
ALL S/L'S PHASE 2 IN VOL. 16, PG. 63, 64
BERKSHIRE INDUSTRIAL PARK PHASE #1 IN VOL. 16, PG. 63, 64



M I D D L E F I E L D T O W N S H I P



SCALE 1"=300'

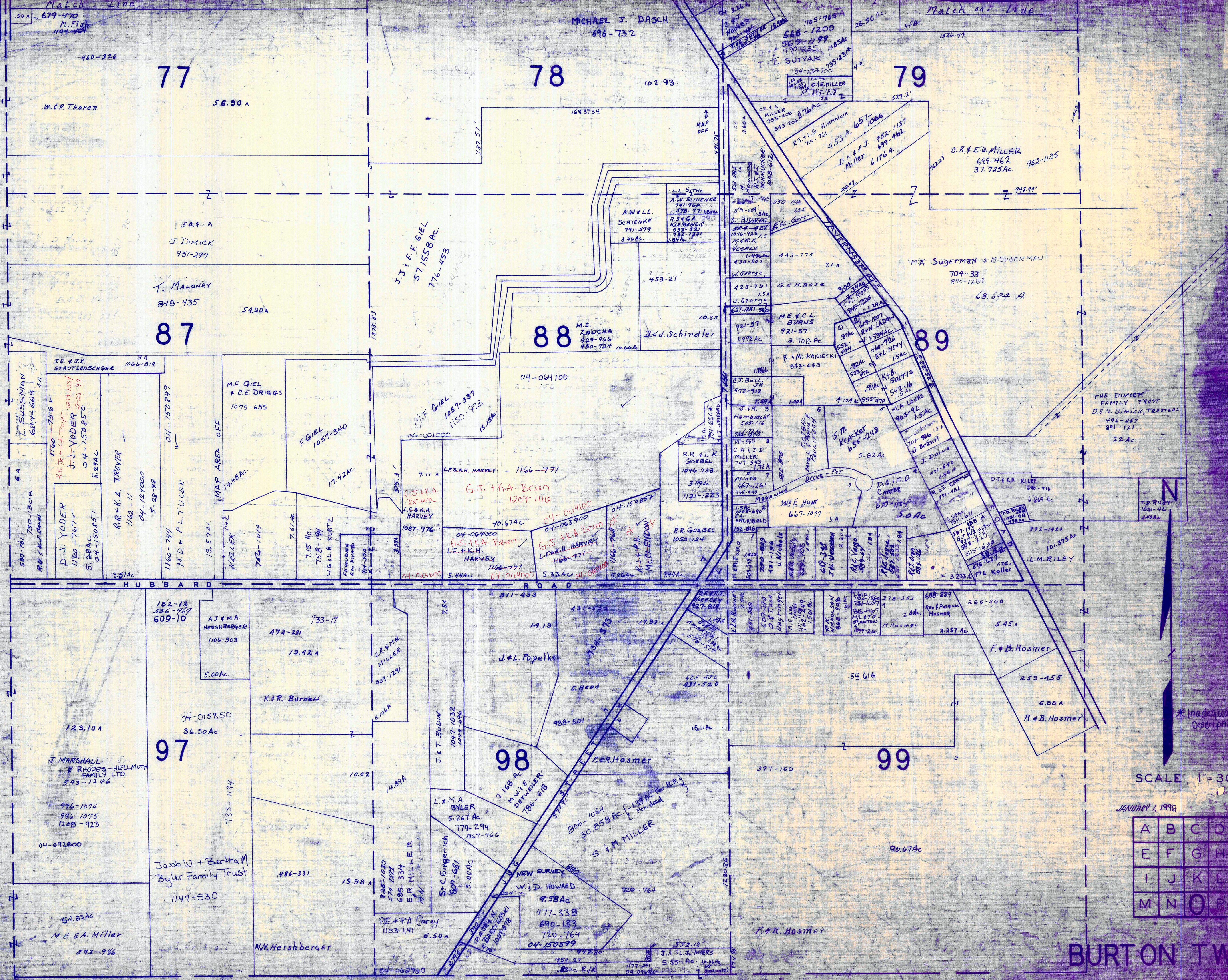
January 1, 1999

A	B	C	D
E	F	G	H
I	J	K	L
M	N	O	P

BURTON TWP

RELATIVE REPRESENTATION

* Inadequate Description



*Inadequate Description

SCALE 1" = 300'

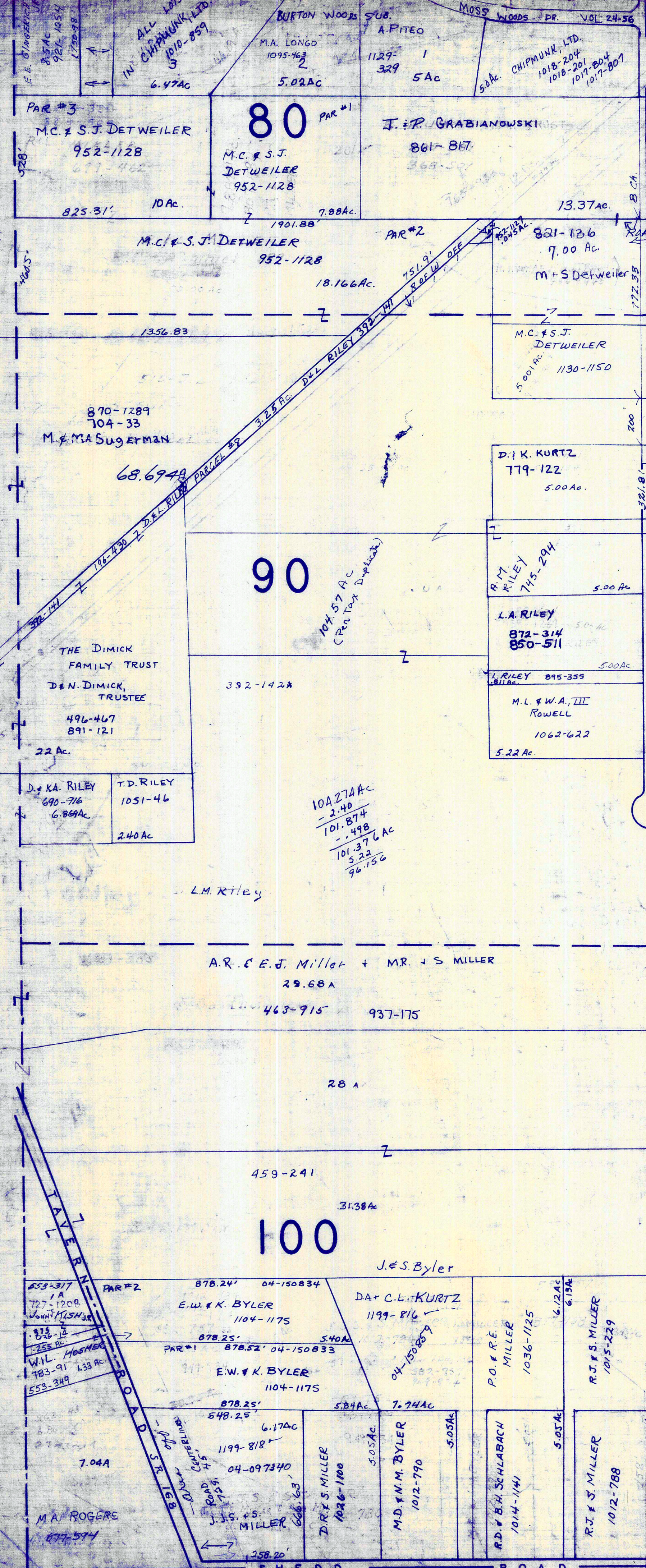
JANUARY 1, 1998

A	B	C	D
E	F	G	H
I	J	K	L
M	N	O	P

BURT ON TWP

RELATIVE REPRESENTATION

TROY TOWNSHIP



SCALE 1" = 300'

A	B	C	D
E	F	G	H
I	J	K	L
M	N	O	P

* Inadequate Description

JANUARY 1, 1999
RELATIVE REPRESENTATION

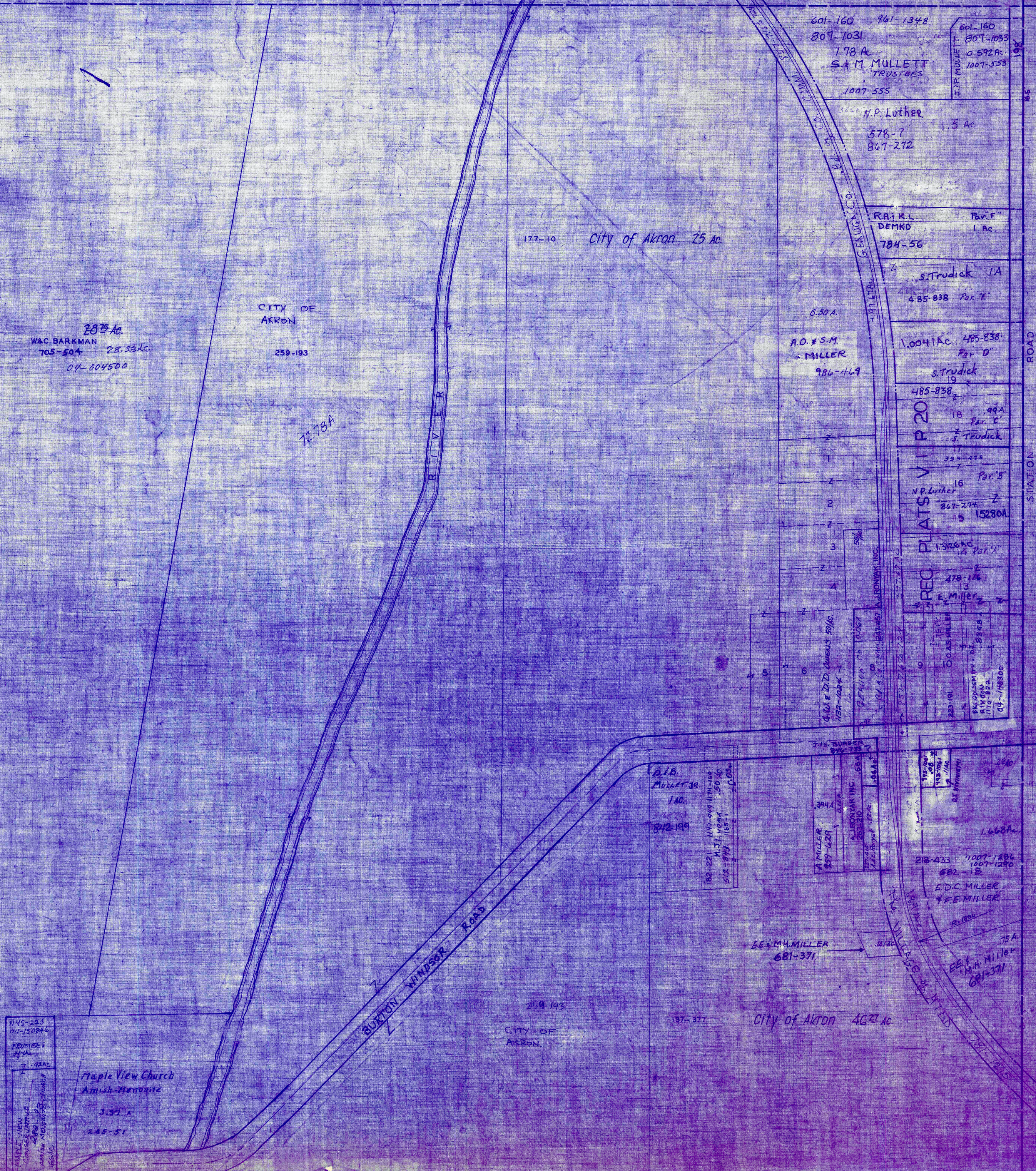
BURTON TWP

TROY TOWNSHIP

BURTON STA
LOT 20

BURTON TP.

BURTON STA
LOT 20



I
D
D
L
E
F
I
E
L
D

SCALE 1" = 200'

JANUARY 5, 1994
RELATIVE REPRESENTATION

* Inadequate
Description

3 BURTON STA
LOT 20

28.5 Ac
W.C. BARKMAN
705-504 28.33 Ac
04-004500

CITY OF
AKRON
259-193

177-10 City of Akron 25 Ac

601-160 901-1348
809-1031 807-1033
1.78 Ac
S.A.M. MULLETT
TRUSTEES
1007-555
0.592 Ac
1007-553

N.P. Luther
578-7 1.5 Ac
867-272

R.A.K.L. DEMKO Par. F
784-56 1 ac

S. Trudick 1A
485-838 Par. E

A.D. & S.M.
MILLER
986-469

1.0041 Ac 485-838
Par. D
S. Trudick

485-838
18 199A
Par. C
S. Trudick

339-479
16 Par. B
N.P. Luther
867-272
15280A

13216 Ac
2 Par. A
E. Miller
178-126
3

225-191
D.O. AS MILLER
818-804
178-822
818-804
178-822
04-148800

D.L. MULLETT JR.
1 Ac
344-204
842-199

344-204
A. MILLER
842-199
A. BOONVAK INC.
842-199
1418-1000-124

218-433 1007-1806
1007-1290
682-15
E.D.C. MILLER
& F.F. MILLER
842-199

B.E. MILLER
681-371

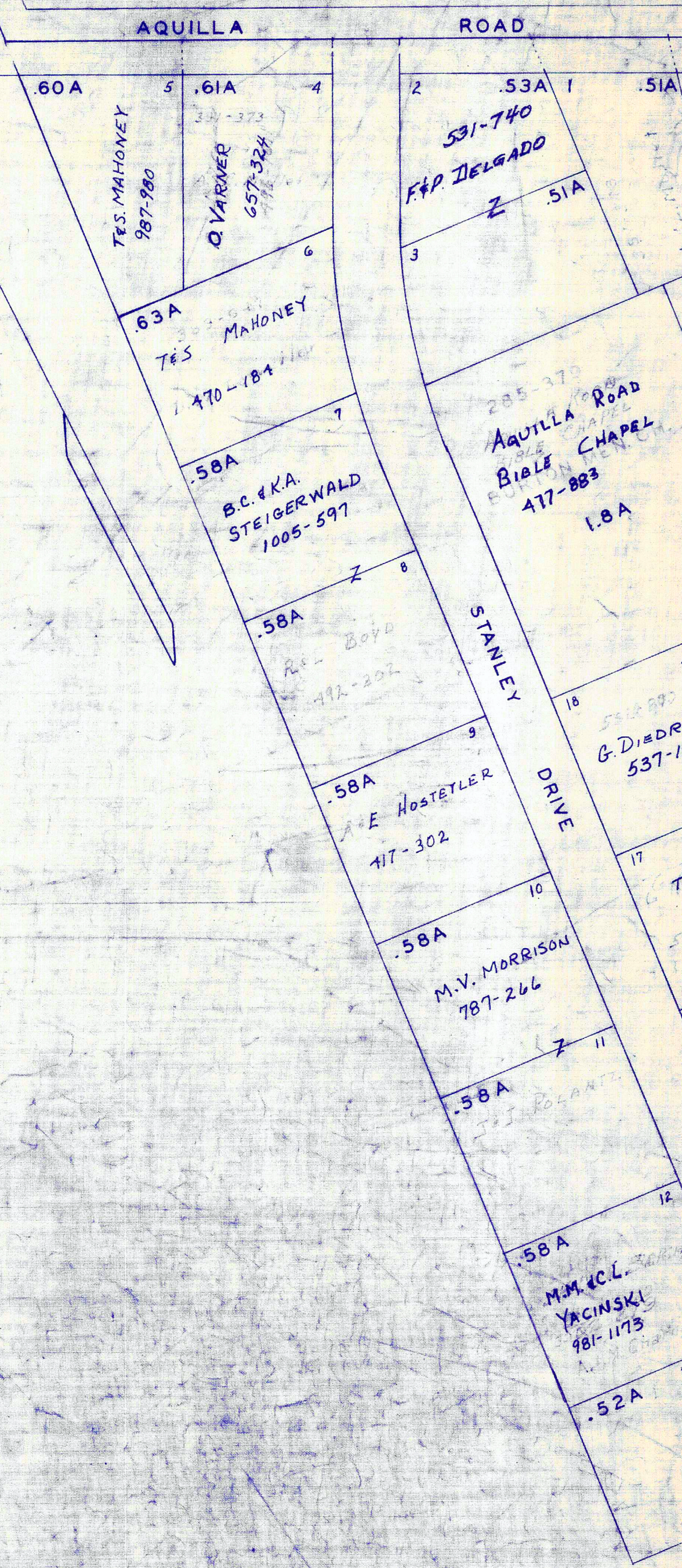
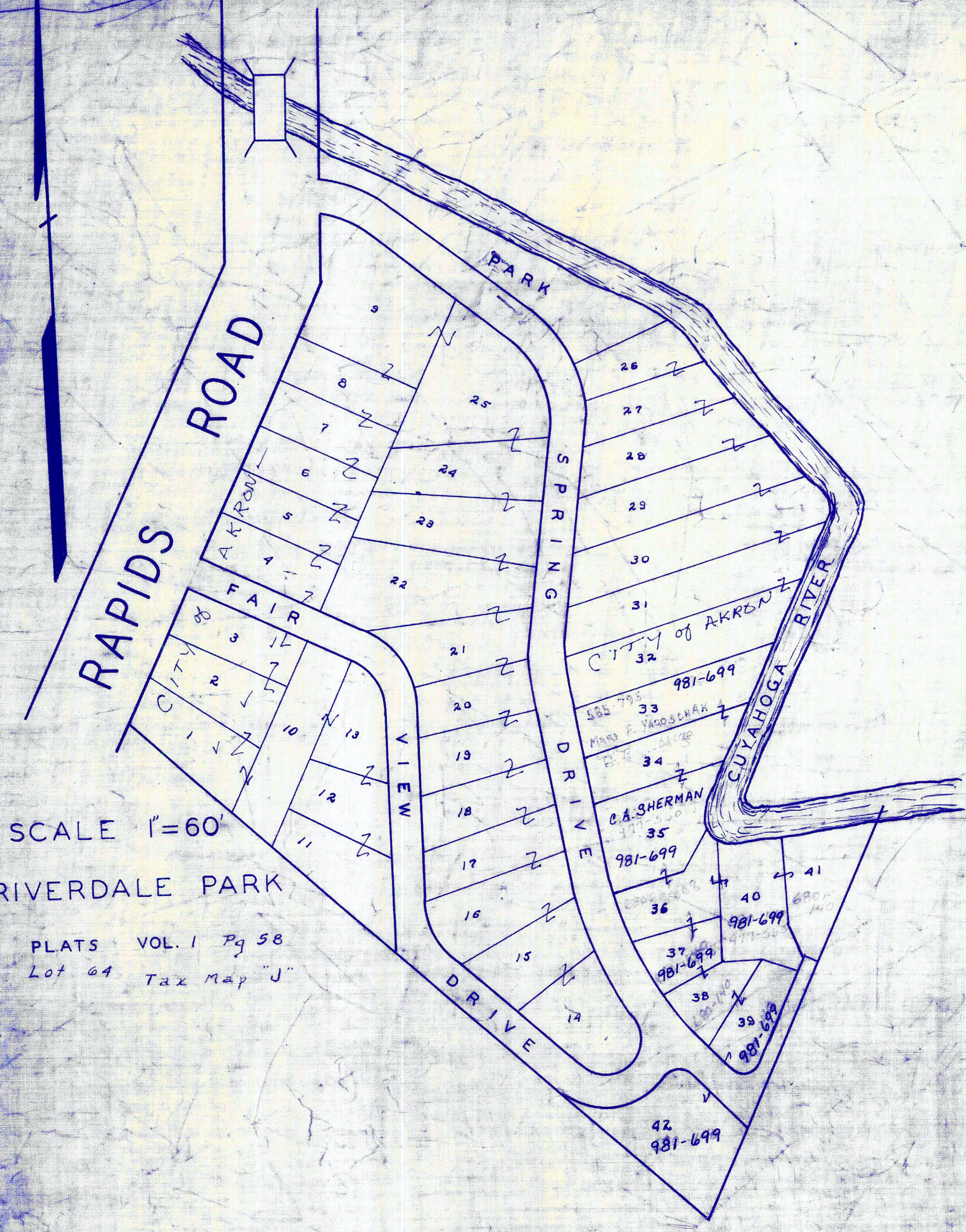
E.E. MILLER
681-371

1145-283
04-150946
TRUSTEES
of the
7-1422
Maple View Church
Amish-Mennonite
5.37 A
248-51

259-193
CITY OF
AKRON

187-377 City of Akron 46²/₃ Ac

SCALE 1"=60'
 RIVERDALE PARK
 PLATS VOL. 1 Pg 58
 Lot 64 Tax Map "J"

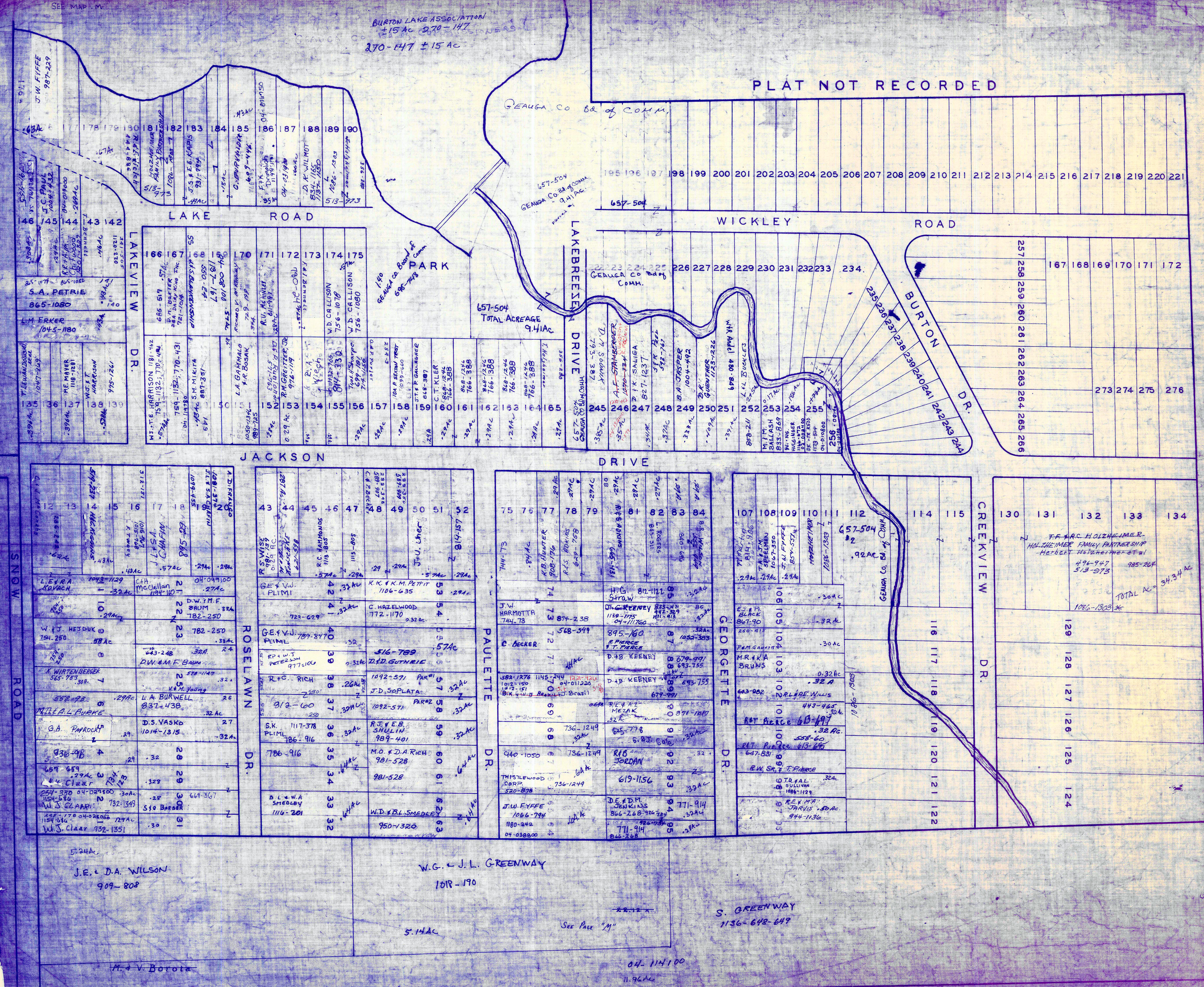


JOHN F. GARBER'S
 SUBDIVISION NO. 1
 PLATS VOL. 7 PG. 99
 SCALE 1"=100'
 Lot 22

* Inadequate
 Description
 JANUARY 1, 1999
 RELATIVE REPRESENTATION
 BURTON TWP.

BURTON LAKE ASSOCIATION
±15 AC 270-147
270-147 ±15 AC

PLAT NOT RECORDED



SNOW ROAD

12 13 14 15 16 17 18
 L. LEVRA KOVACH 1043-1129
 W. J. HESDUK 754-250
 K. WIRTENBERGER 565-753
 M. L. BURKE
 G.A. PARROCK
 657-659
 657-330
 W.S. CLARKE
 1154-1156
 W.J. CLARKE 732-1351

19 20 21 22 23 24 25
 A. DI FRANCO
 D.W. M.F. BRUM 782-250
 D.W. & M.F. BAUM
 L.A. BURWELL 837-438
 D.S. VASKO 1014-1315
 786-916
 D.L. & W.A. SMOLEY 1116-201

26 27 28 29 30 31 32
 R.S. WISE
 GEYVA PLIMI
 R.C. RICH
 S.K. PLIMI
 D.L. & W.A. SMOLEY

33 34 35 36 37 38 39
 R.C. HARMONDS
 D.D. GUTHRIE
 J.D. SOPLATA
 R.T. & E.B. SHULIN
 M.O. & D.A. RICH
 W.D. & B.L. SMOLEY

40 41 42 43 44 45 46 47 48 49 50 51 52
 K.K. & K.M. PETTIT
 C. HAZELWOOD
 516-789
 D.D. GUTHRIE
 J.D. SOPLATA
 R.T. & E.B. SHULIN
 M.O. & D.A. RICH
 W.D. & B.L. SMOLEY

53 54 55 56 57 58 59 60 61 62 63 64
 H.G. STRAW
 D. BECKER
 582-1276
 THISTLEWOOD CORP
 J.W. EYFFE
 1180-242

65 66 67 68 69 70 71 72 73 74 75 76 77 78 79 80 81 82 83 84
 D. BECKER
 582-1276
 THISTLEWOOD CORP
 J.W. EYFFE
 1180-242

85 86 87 88 89 90 91 92 93 94 95 96 97 98 99 100 101 102 103 104 105 106 107 108 109 110 111 112 113 114 115
 H.G. STRAW
 D. BECKER
 582-1276
 THISTLEWOOD CORP
 J.W. EYFFE
 1180-242

116 117 118 119 120 121 122
 G.T. & A.L. SULLIVAN
 R.E. & M.A. JARVIS

129 128 127 126 125 124
 F.F. & R.C. HOLZHEIMER
 HOLZHEIMER FAMILY PARTNERSHIP
 HERBERT HOLZHEIMER ET AL
 496-947
 985-264
 513-973
 TOTAL AC = 34.34 AC
 1986-1308 *

130 131 132 133 134
 F.F. & R.C. HOLZHEIMER
 HOLZHEIMER FAMILY PARTNERSHIP
 HERBERT HOLZHEIMER ET AL
 496-947
 985-264
 513-973
 TOTAL AC = 34.34 AC
 1986-1308 *

J.E. & D.A. WILSON
909-808

W.G. & J.L. GREENWAY
1018-190

S. GREENWAY
1156-642-649

SCALE 1"=100'

BURTON TWP LOT 91

JANUARY 1, 1990
RELATIVE REPRESENTATION

* Inadequate Description

Burton
1999